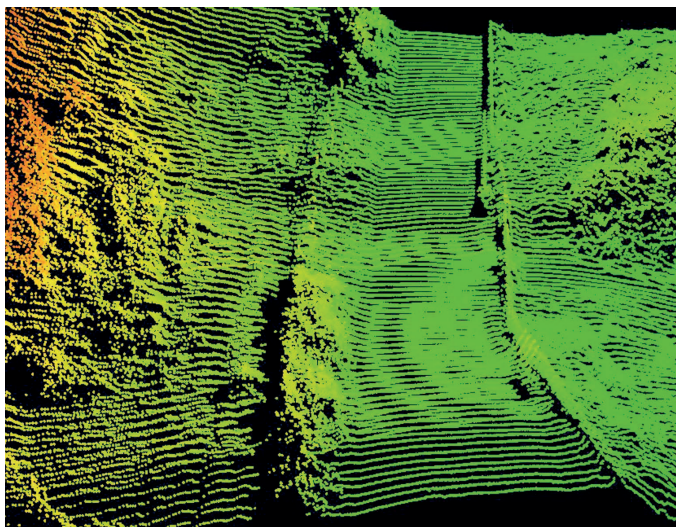


Turnkey solution for quick, cost effective surveys



Survey industry expertise is behind the Routescene UAV LidarPod®. We understand the problems you need to solve and have combined intelligent thinking with experience to design a reliable and practical solution. As a result the Routescene UAV LidarPod is a robustly engineered, flexible system which has been developed specifically for use on Unmanned Aerial Vehicles (UAV). The turnkey solution includes LidarViewer, specially developed software to handle your resulting data.



Revolutionising surveying

Our new disruptive technology is attractive for many sectors and situations where accurate mapping is essential but difficult to achieve.

Awkward, dangerous and hostile environments

Invaluable and the only safe way to survey dangerous and hostile environments where access is difficult such as landslips or disaster zones.

Where speed is of the essence

Fast data collection and analysis, perfect in situations where speed is of the essence and the outcomes are needed immediately, for instance, in opencast mine planning, reconnaissance or emergency response.

Remote locations

The only viable solution for remote locations or those with poor infrastructure where airborne (fixed wing) LiDAR is prohibitively expensive.

To replace existing survey techniques

High specification and high accuracy, low weight, self contained turnkey LiDAR system. It is simple to operate and enables rapid deployment in the field.



How can I use this technology?

Across many industries including:

- survey & mapping
- academic research
- utilities & energy
- mining
- forestry

This cutting edge technology can be used for:

- 3D mapping
- large scale topographic surveys
- powerline inspections
- scoping, planning and management of mines
- forestry design, management and operation

What are the benefits?

- saves time, generating more detailed and faster results compared to conventional survey techniques
 - reduces field time
 - accurate, detailed measurements
 - quicker results collecting all data in a single pass
 - higher density of data provides detailed 3D view
 - collects data from different angles to minimise shadows
- avoids exposure of personnel to awkward, dangerous and hostile environments
- easy to transport as it is portable, lightweight and compact

The financial aspect

The Routescene UAV LidarPod® is competitively priced with a high rate of return and, combined with achieving faster results, your project costs will be substantially lower than existing survey methods such as photogrammetry.

Product conformity

The Routescene LidarPod is available for use in any country worldwide. The product is non-ITAR (International Traffic in Arms Regulations) rated so it is not subjected to export controls.

The LidarPod has been independently CE and FCC certified to ensure it is compliant to electrical and radio transmission standards.

More about The Routescene UAV LidarPod®

Data density, resolution, relative and positional accuracy

It combines the **best technology** on the market to capture survey grade positional accuracy together with a very high point cloud density.

Low weight

Low total weight less than 2.5kg for the **complete system**.

Quality and level of resilience

Self contained turnkey LiDAR system including GPS / INS, radio telemetry, data storage and power management.

Processing your data

LidarViewer, **specially developed software**, enables you to easily import, visualise, apply filters to the large volume of data you collect in a smart way, enabling the use of GIS and CAD packages thereafter.

Technical specification available at www.routescene.com



Routescene® is a global operation. We have a strong cutting edge culture, offering agility and innovation.

We offer authoritative insight across all aspects of data management and have industry recognition as data visualisation experts. With this knowledge we have invented the Routescene LidarPod and LidarViewer, which are robust, easy to use, intuitive products with wide ranging applications. These products will deliver fast geospatial data capture, analysis and visualisation to improve your commercial decisions and performance.

www.routescene.com